



# PREPARING THE PATTERN

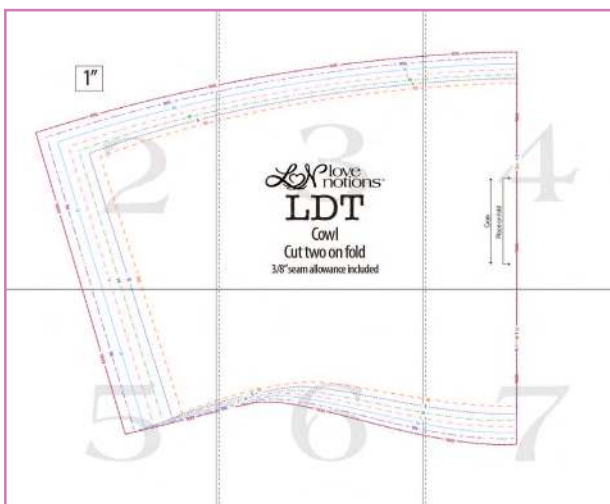
Print the pattern at 100% with no scaling. After printing, check the 1"×1" box. **This is a no-trim pattern with layers.** The pattern has a border on the bottom and right side. **Line up the second page on top of the first, butting right up but not over the line.** Tape in place and continue on with page 3 on top of page 2, and so on. You will notice there is a small piece of line that won't print. Cut like normal and fill in the line if you wish.

[See this tutorial for more help.](#)

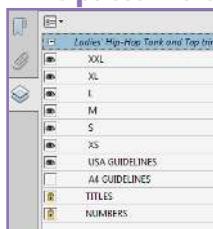


**Note there are TWO vertical guide lines. The solid line is for US printers and the dotted line is for international users who are printing on A4 paper. These lines can be turned on and off independently in the layers menu.**

**One of them must remain on so the pattern can be lined up correctly.**

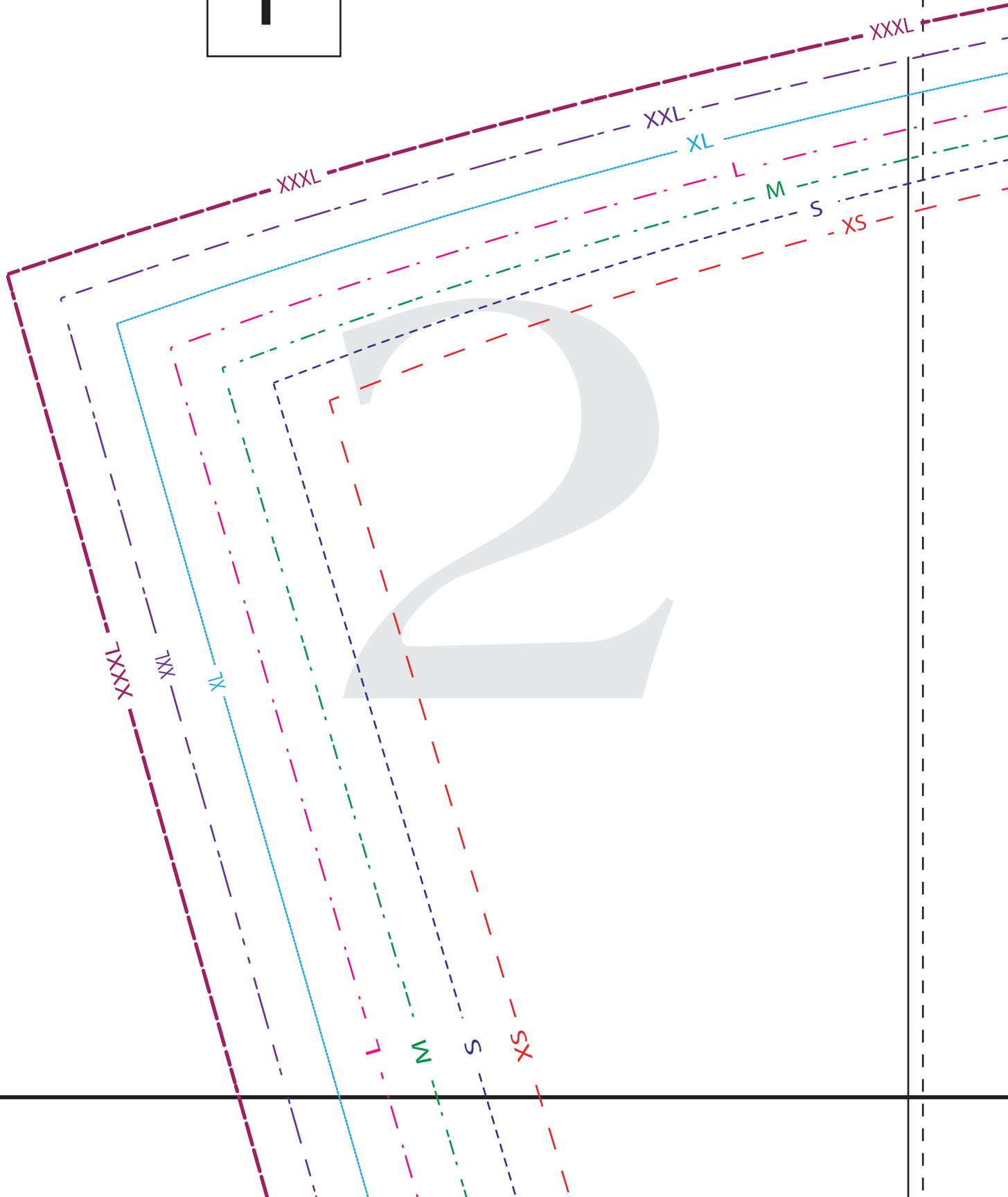


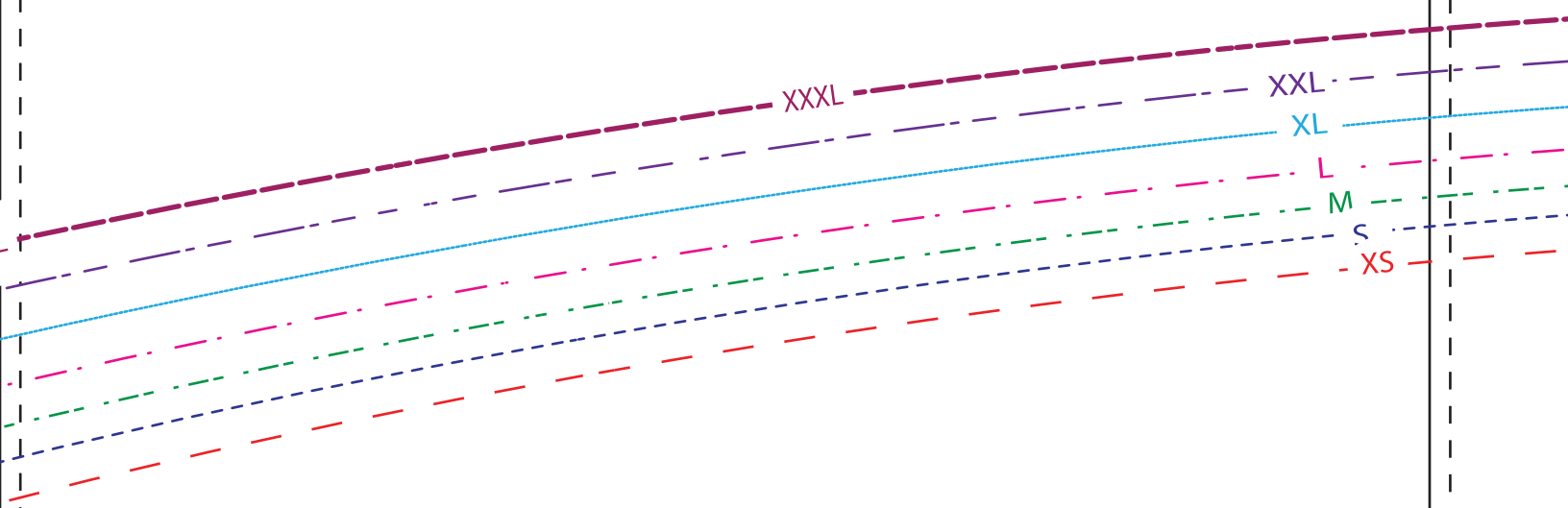
**This pattern also has nested layers!**



To print only your size, see the layers tab on the left of your Adobe PDF reader. Simply unselect the sizes you don't wish to print so that only your desired size(s) shows.

1"





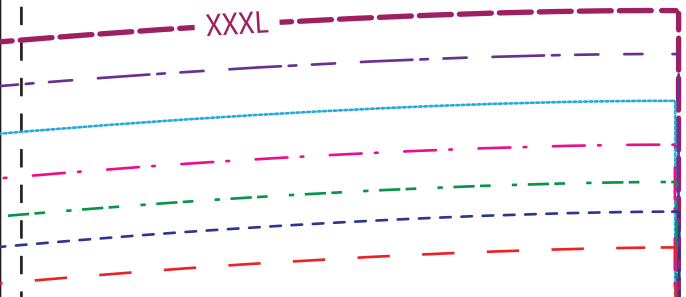
*LN* love notions™

**LDT**

Cowl

Cut two on fold

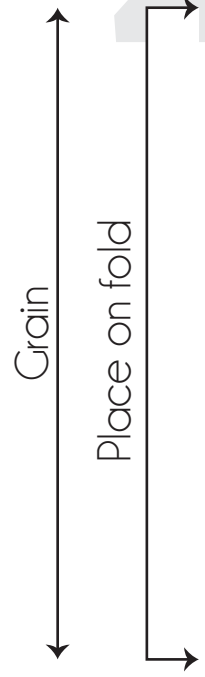
3/8" seam allowance included



XXXL

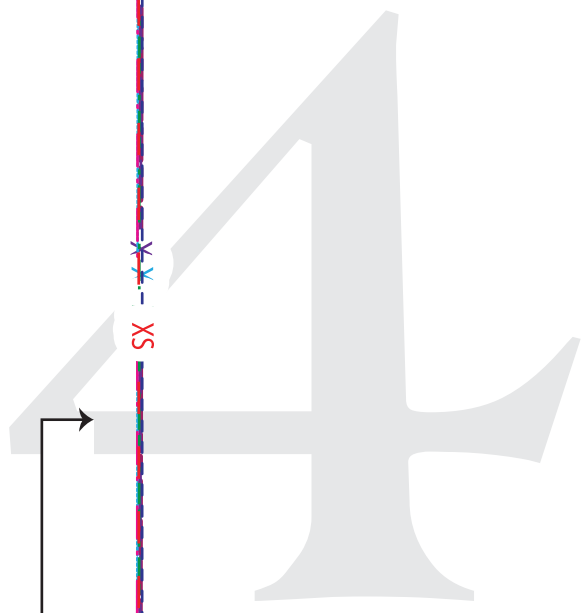
SX

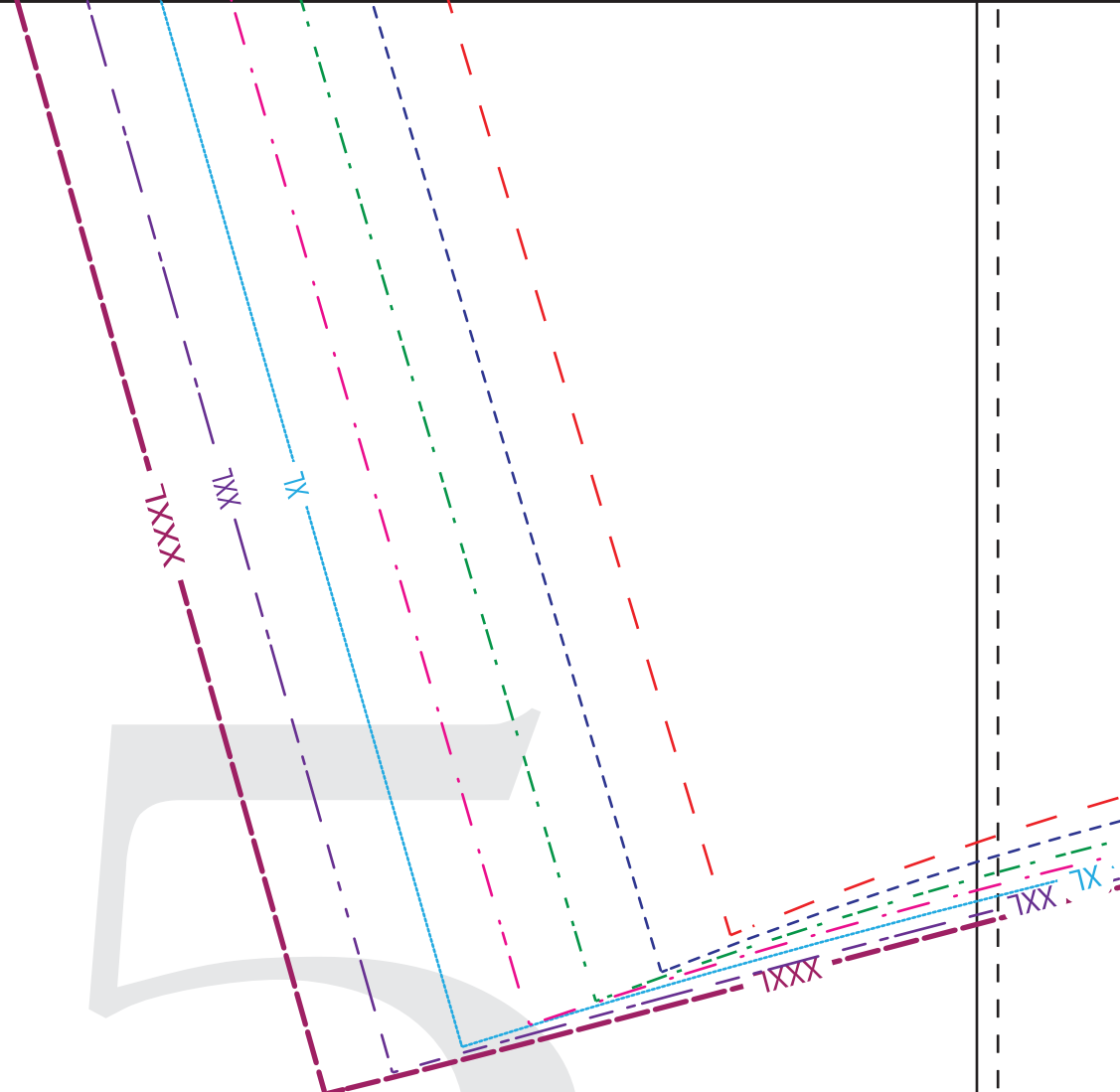
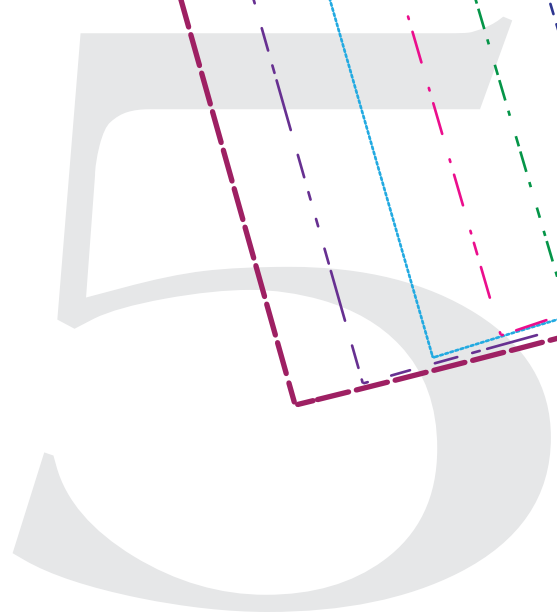
XXXL

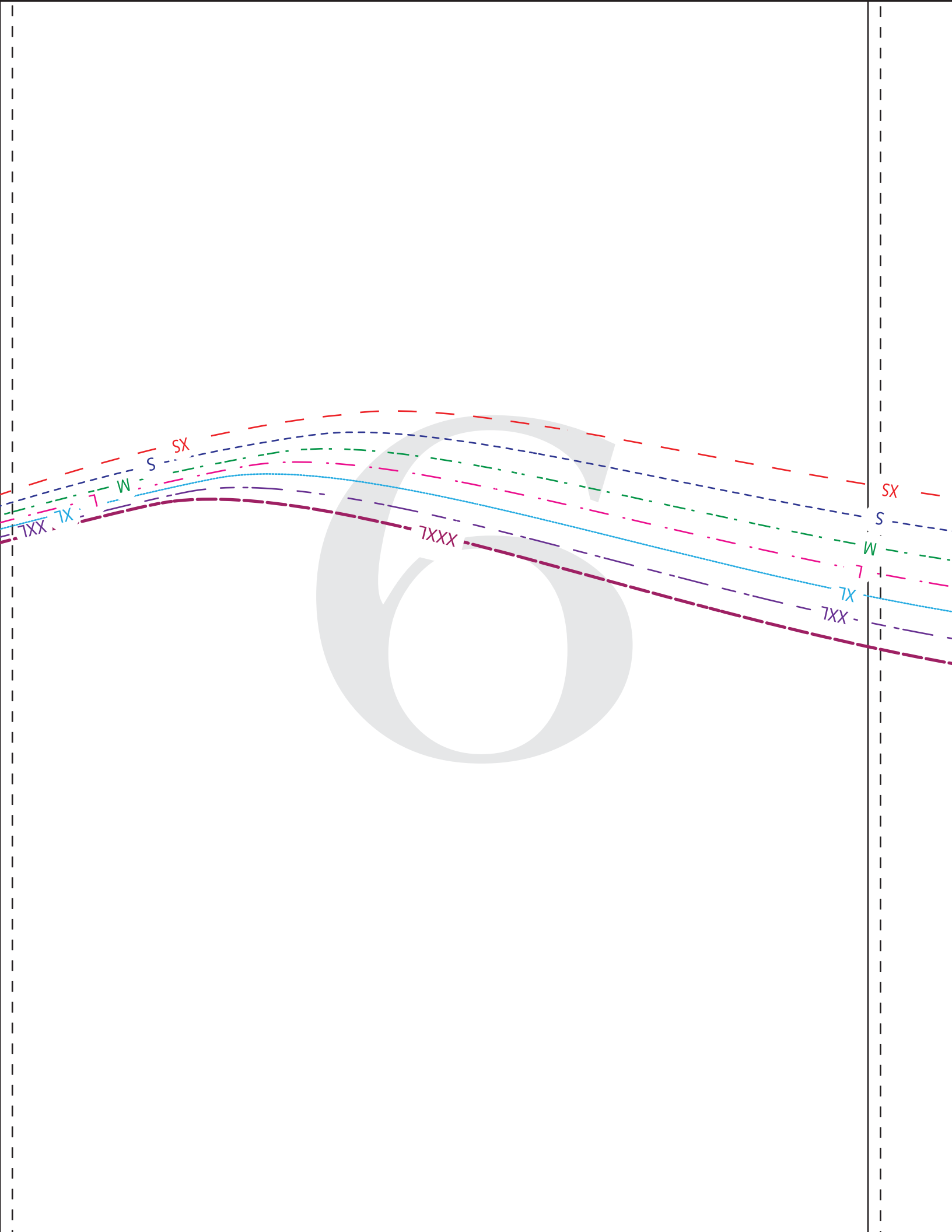


Grain

Place on fold







6

SX

S

W

T

TX

TXX

SX

S

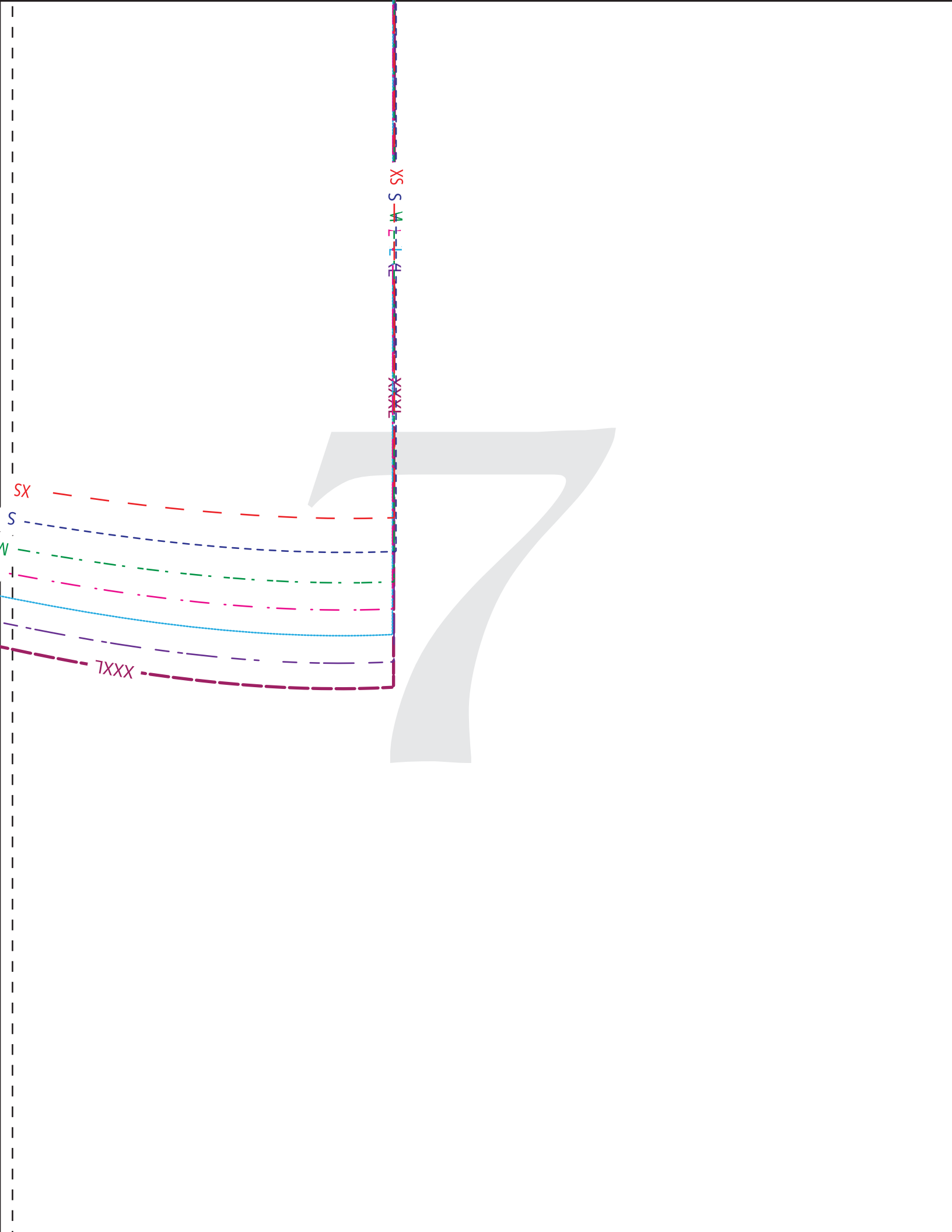
W

T

TX

TXX

TXX



X S

S

W

T

X

X

X

X

X

X

X

X

X

X

X

X

X

X

X

X

X

X

X

X

X

X

X

X

X

X

X

X

X

X

X

X

X

X

X

X

X

X

X

SX

S

W

T

X

X

X

X

X

X

X

X

X

X

X

X

X

X

X

X

X

X

X

X

X

TXXX