

Grain



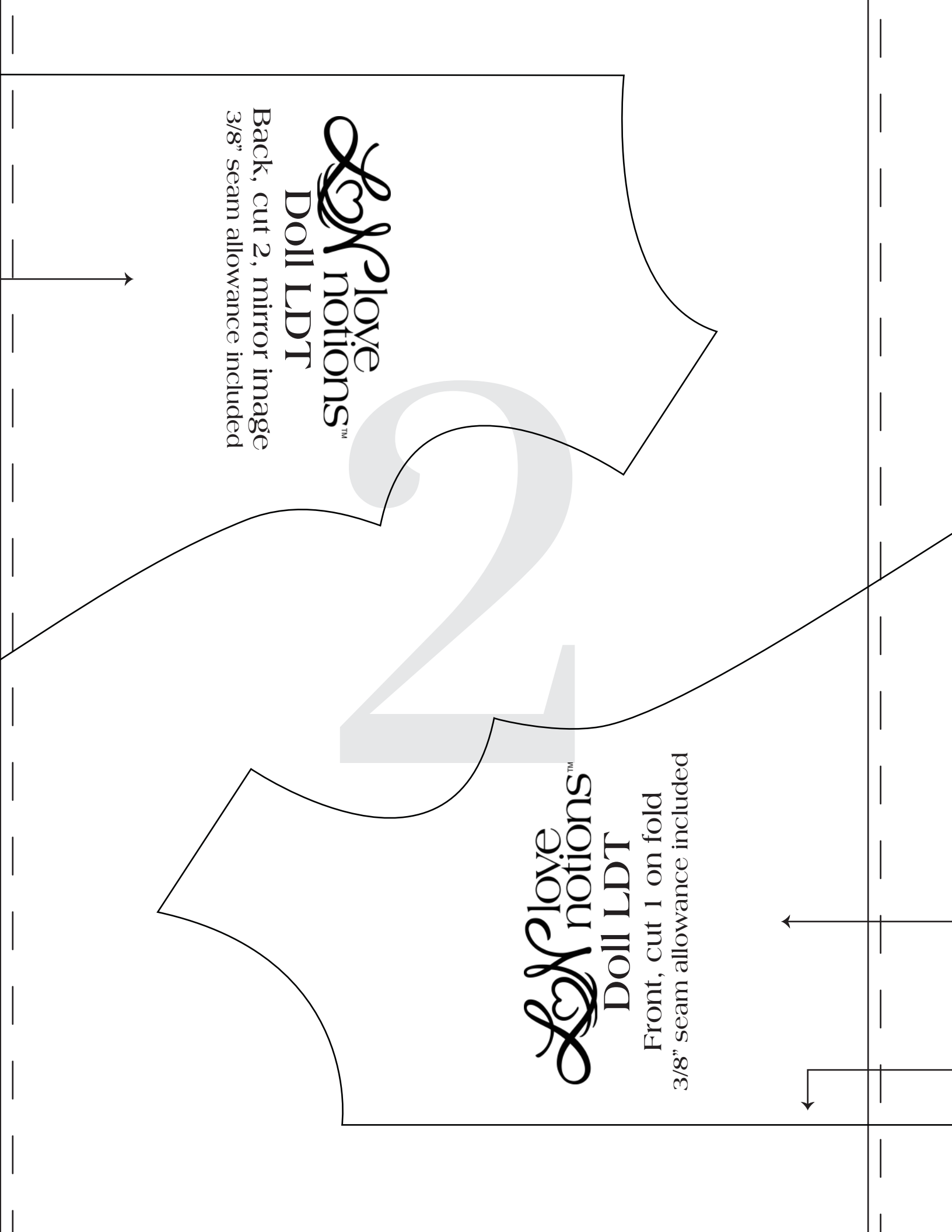
1"

Love notions™
Doll LDT

Back, cut 2, mirror image
3/8" seam allowance included

Love notions™
Doll LDT

Front, cut 1 on fold
3/8" seam allowance included



*Lof*love
notions™
Doll LDT

sleeve, cut 2, mirror image
3/8" seam allowance included

Grain



Grain

Place on fold

LDT DOLL DRESS



Using a 3/8" seam allowance

RST = Right Sides Together WST= Wrong Sides Together

CUTTING

- ♥ One dress front on fold
- ♥ Two dress backs, mirror image
- ♥ Two sleeves
- ♥ Scrap of VELCRO®

1. Fold and press sleeve hems with a 3/8" hem and straight stitch in place.
2. With RST, align dress front to back at the shoulder seams and stitch/serge.
3. Fold neckline to the wrong side and press. Straight stitch in place.
4. Fold and iron each center back seam to wrong side 3/8". Straight stitch in place.
5. Pin sleeve to armhole RST, stitch/serge. Repeat for second side.
6. Align front and back at the side seams and stitch/serge in one continuous line.
7. Hem dress by turning up hem 1", press and stitch in place. Attach VELCRO® to the top of the back of the dress with a zig-zag stitch. The rest of the dress will remain open to make it easier for little hands to dress their babies.