

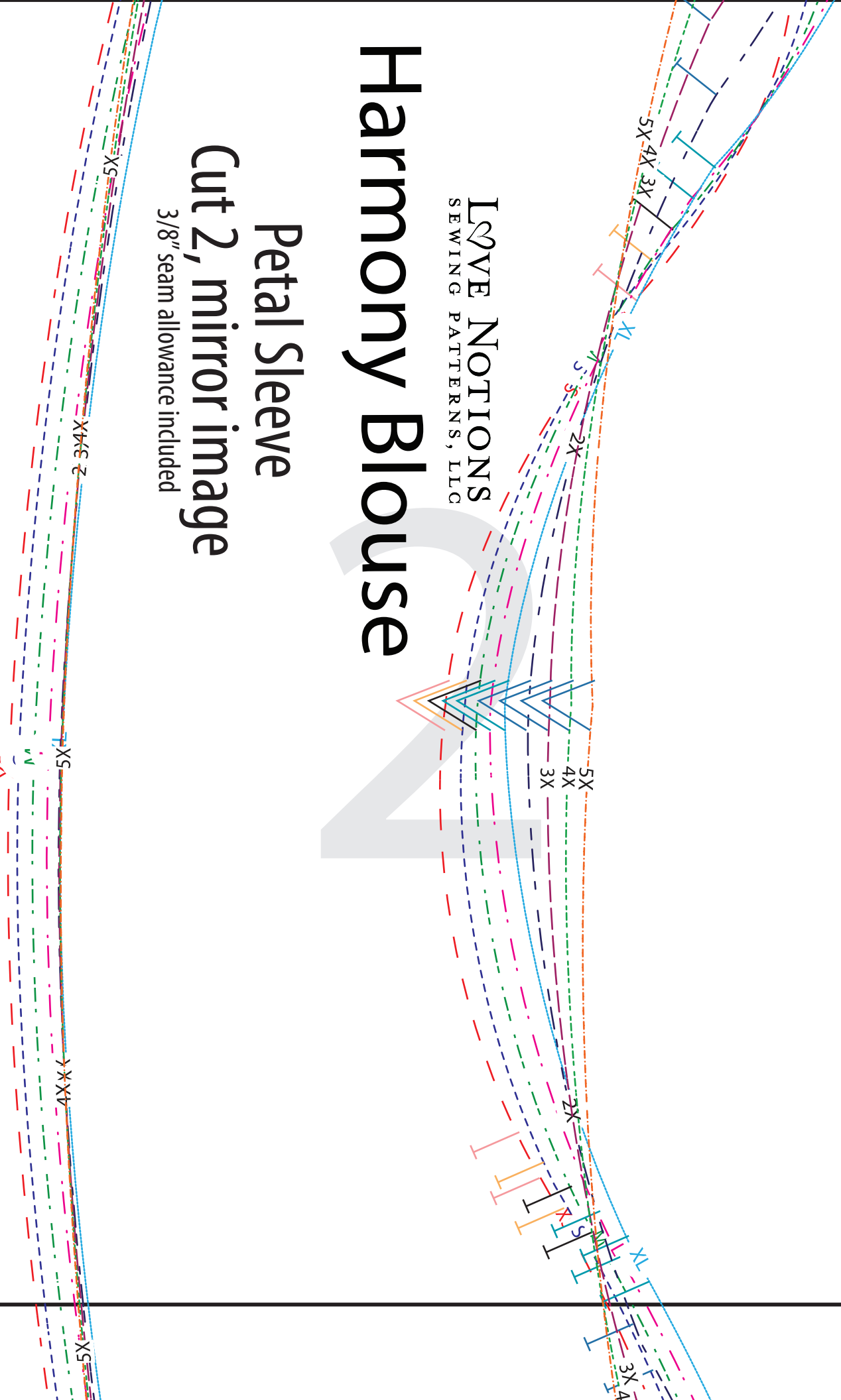
LOVE NOTIONS
SEWING PATTERNS, LLC

Harmony Blouse

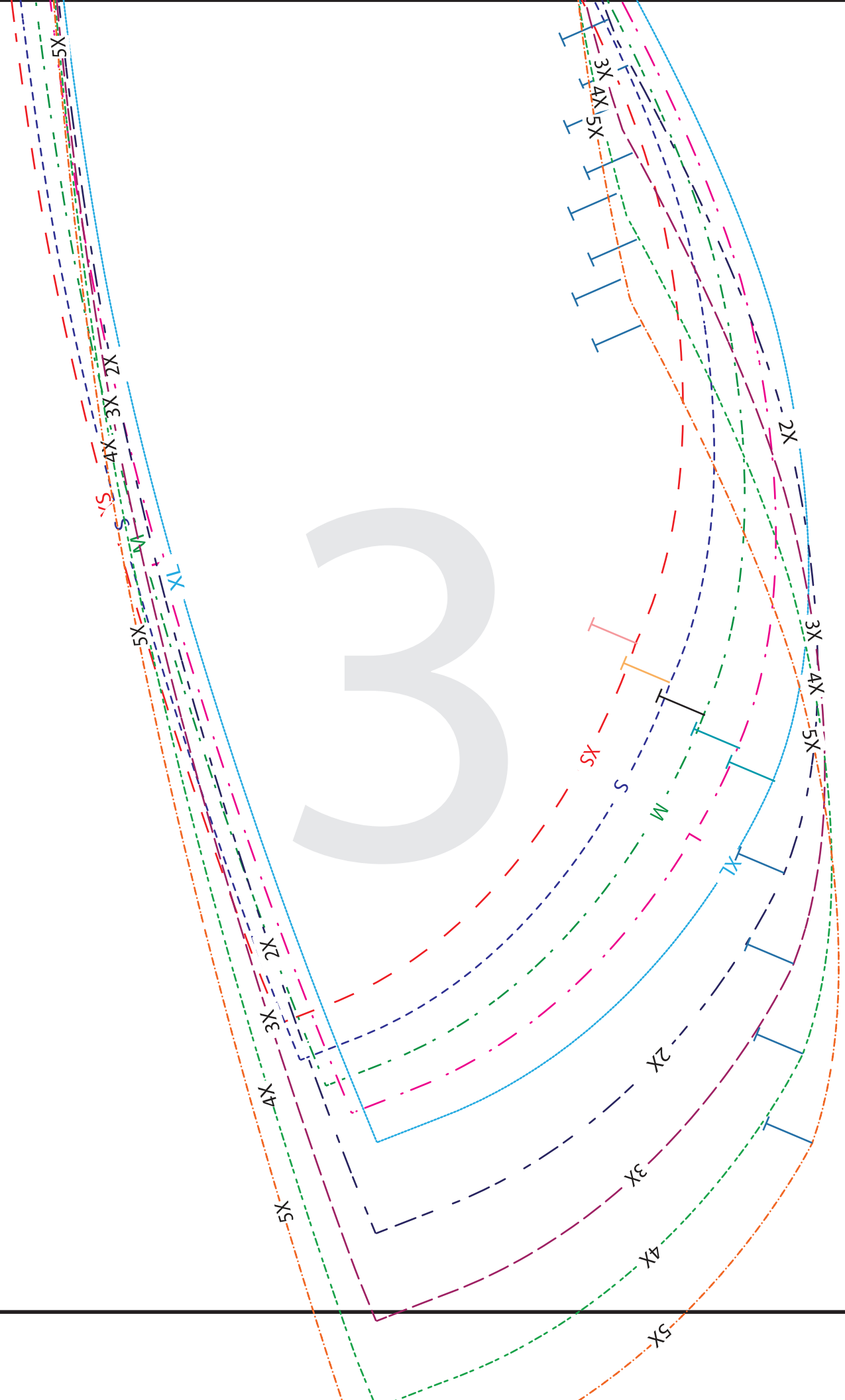
Petal Sleeve

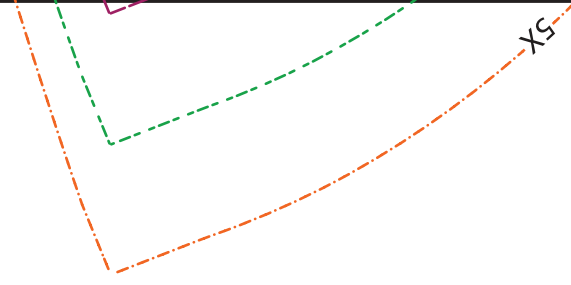
Cut 2, mirror image

3/8" seam allowance included



3





How to sew the petal sleeve

1. Press the hem up 1/2". Hem the sleeve using your preferred method. A 1/2" hem allowance is included.
2. Align the outer most single 'T' notches, overlapping so the raw edges match.
3. Baste across the overlapped portion.

Continue with construction on page 9 step 7

