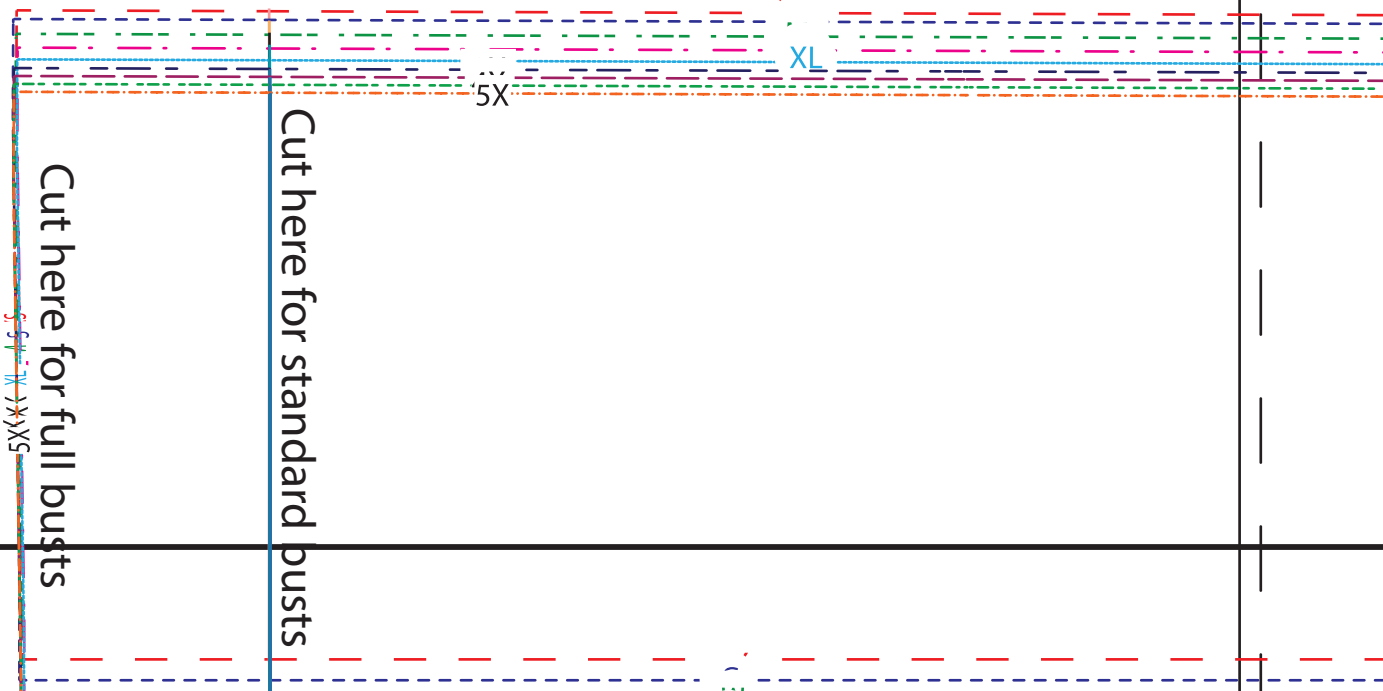
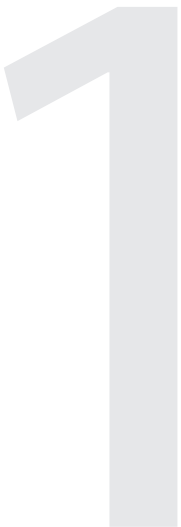


1"



2

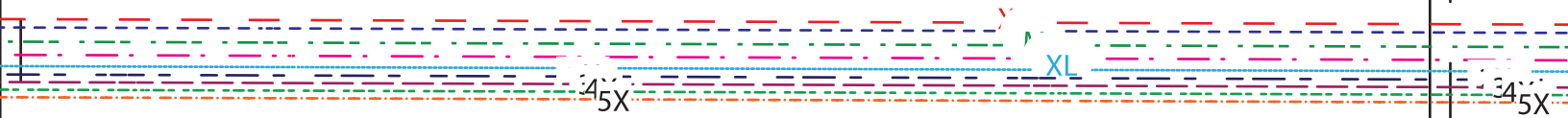
5X

XL

5X

Lengthen/shorten line

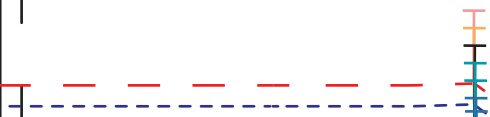
3



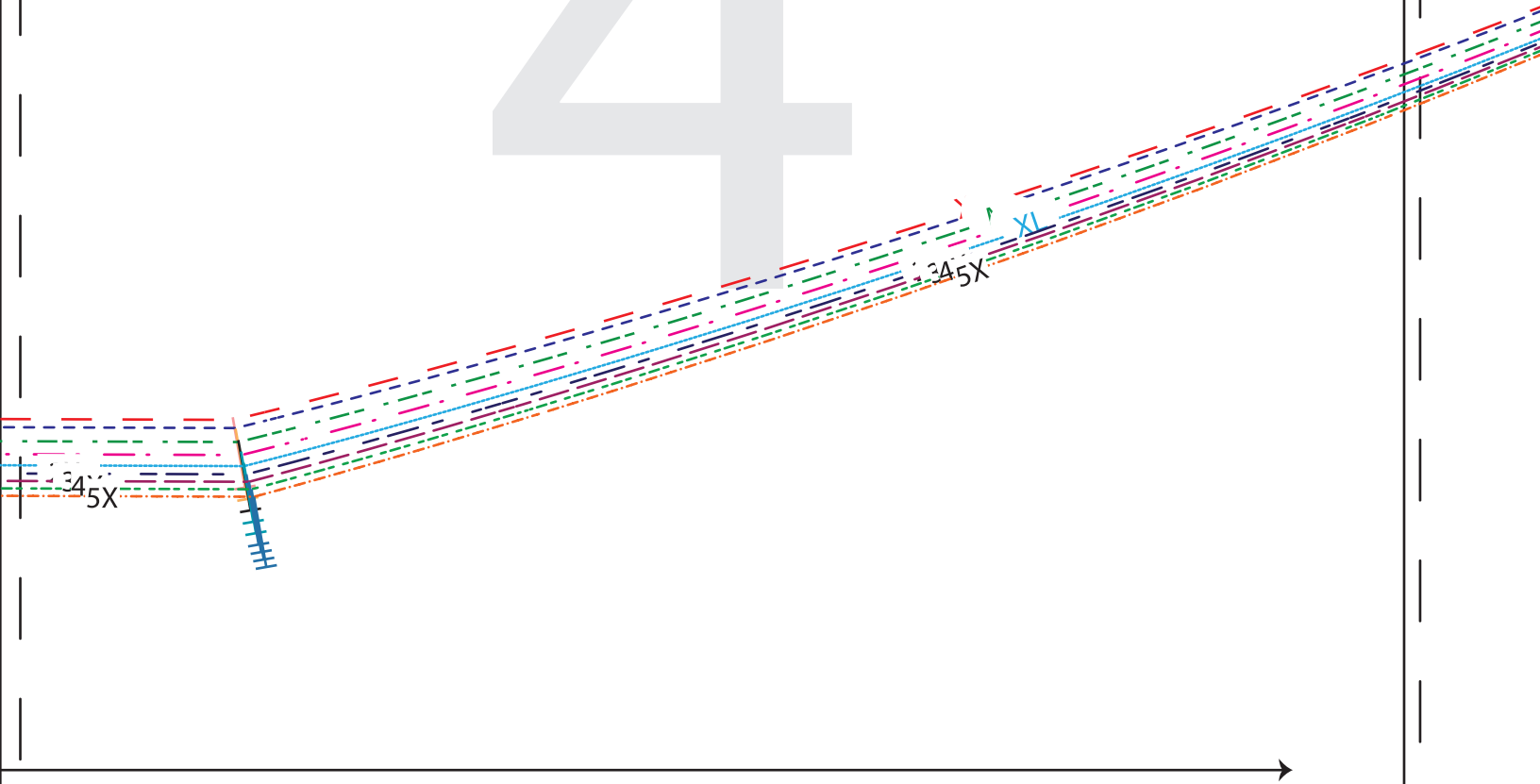
4
5X

XI

4
5X



4



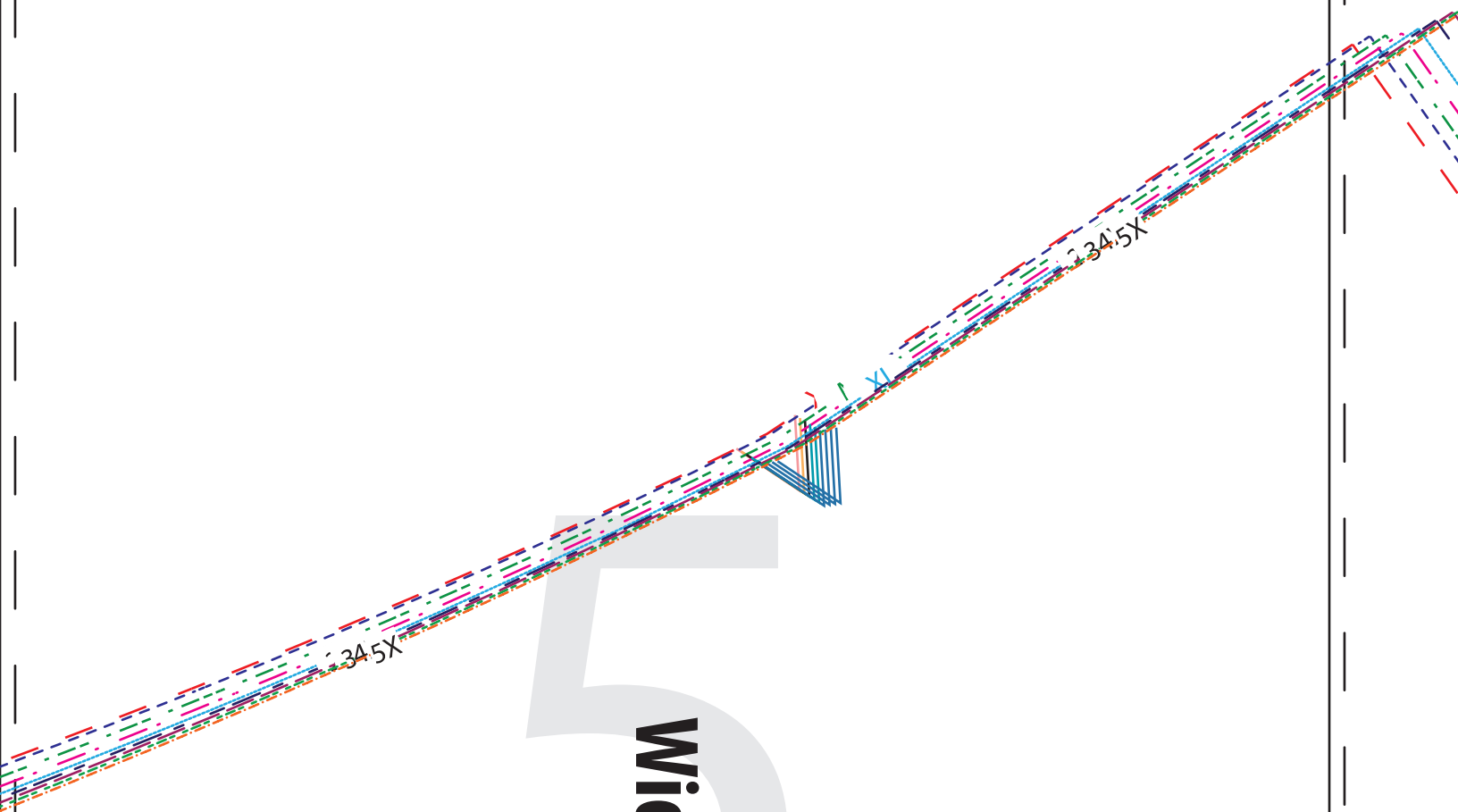


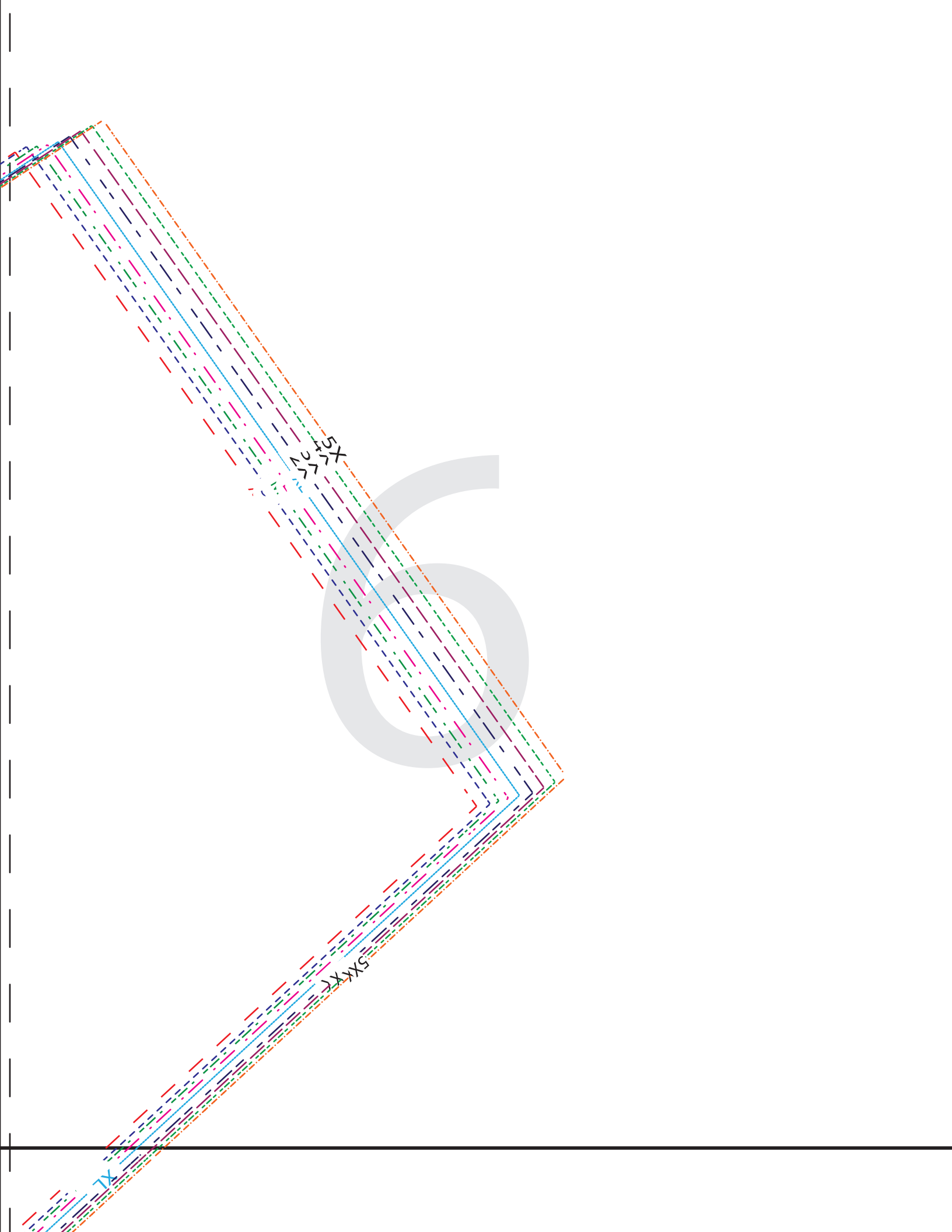
LOVE NOTIONS
SEWING PATTERNS, LLC

Octave Coat

Wide Lapel Shawl Collar

Cut 4: 2 mirror image sets
1/2" seam allowance included







7

ts

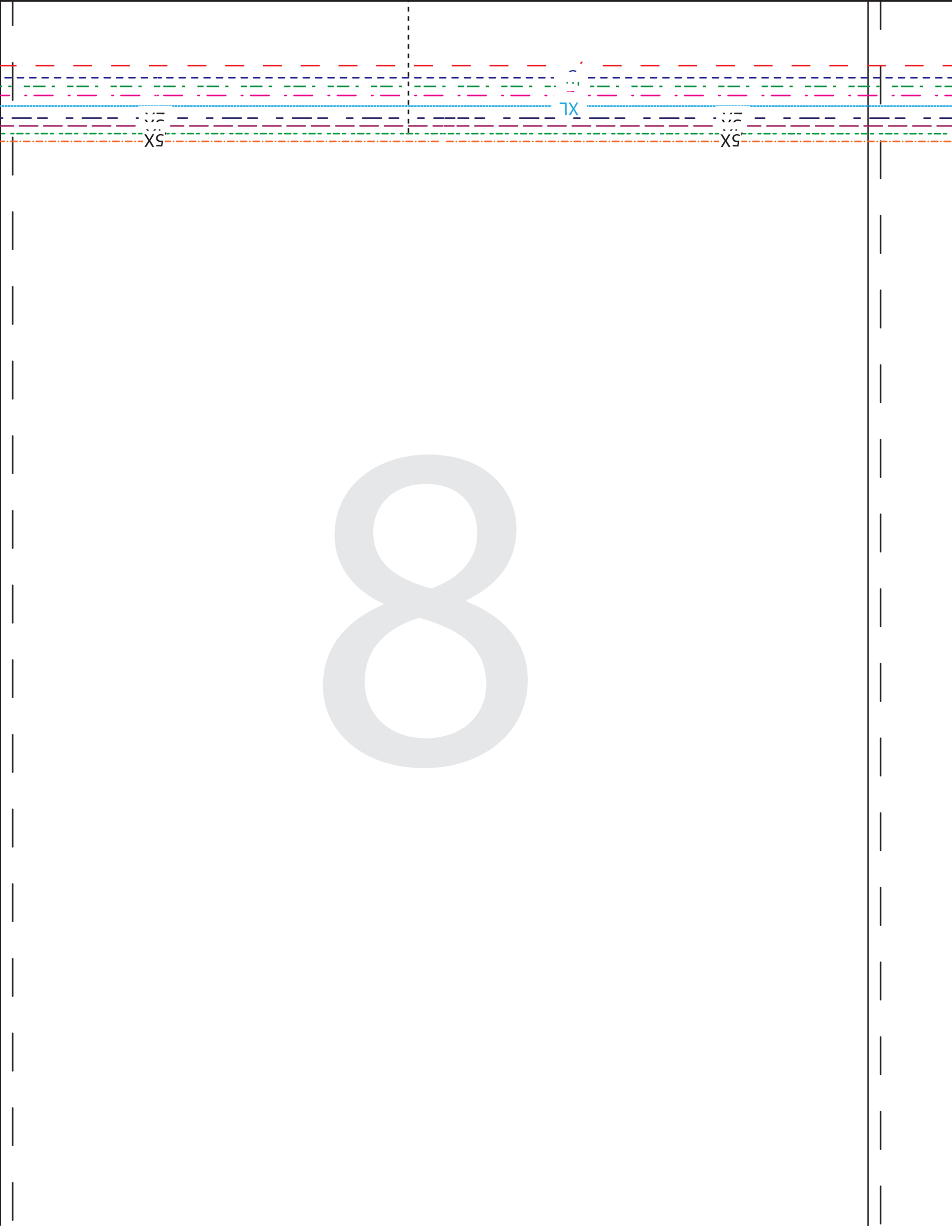
dusts

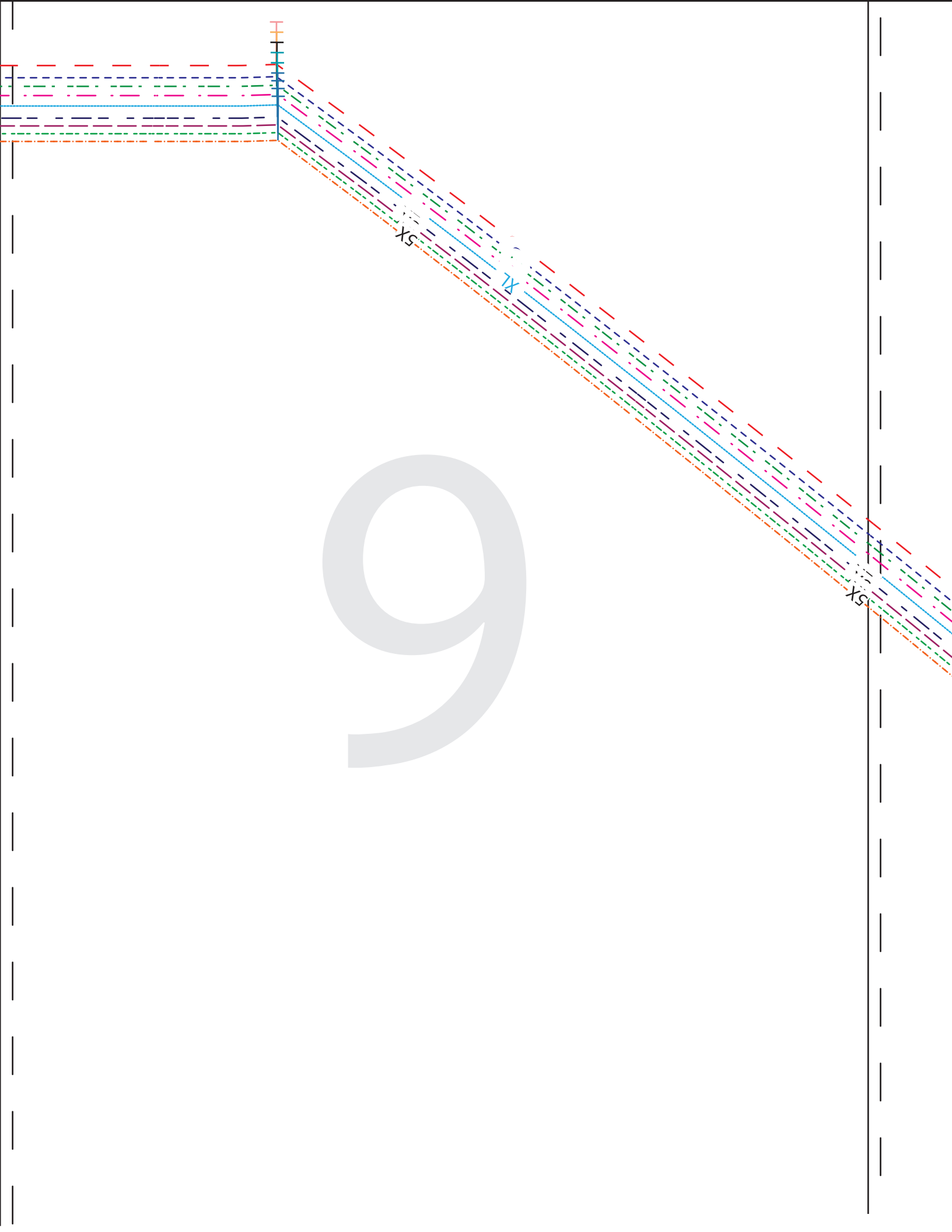
XS

XS

TX

A set of horizontal lines for handwriting practice. From top to bottom, there are: a red dashed line, a blue dashed line, a green dashed line, a pink dashed line, a solid blue line, a solid purple line, a solid green line, a solid orange line, and a solid brown line. The letters 'ts', 'dusts', 'XS', 'XS', and 'TX' are printed at the top of these lines.





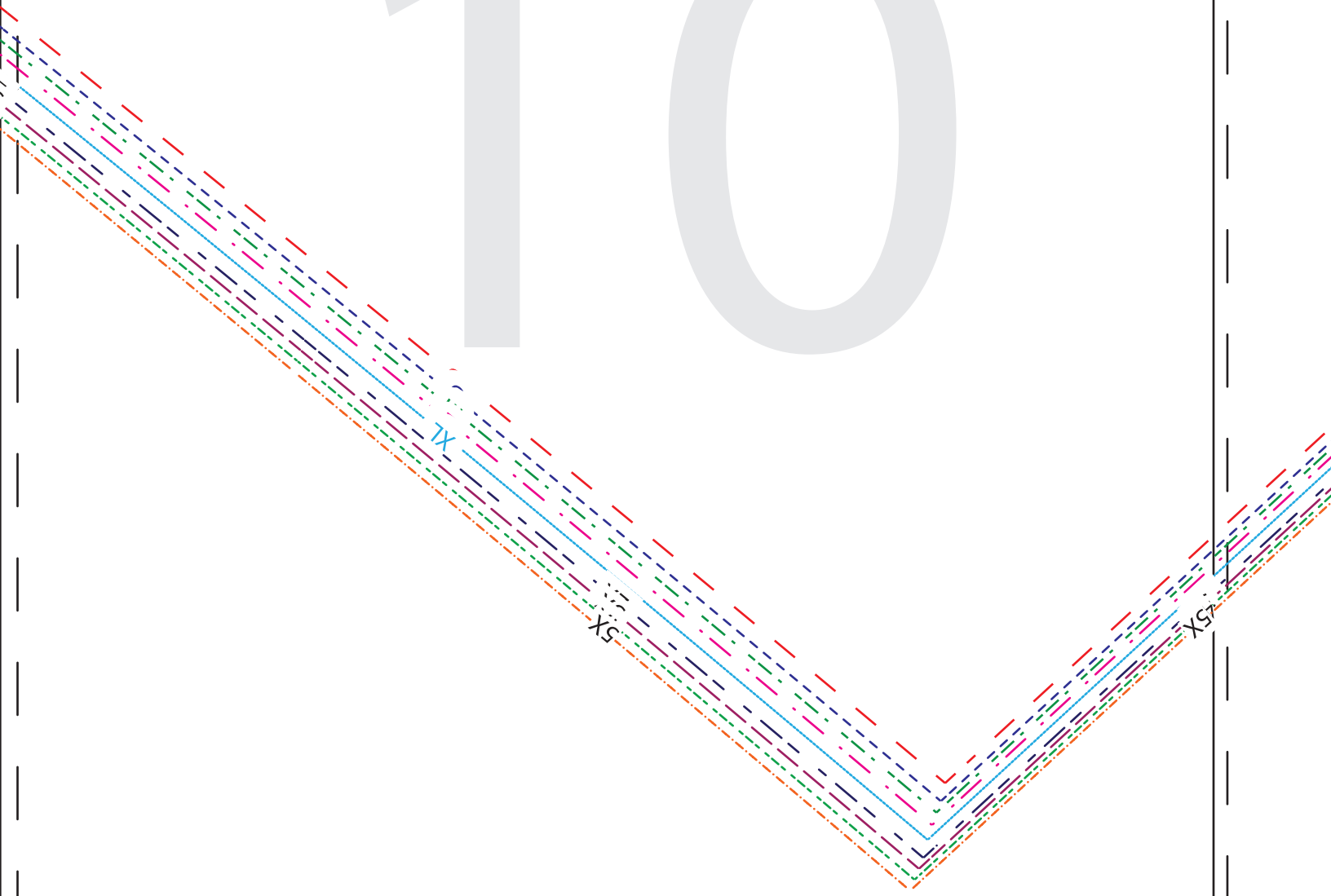
9

Xs

X

Xs

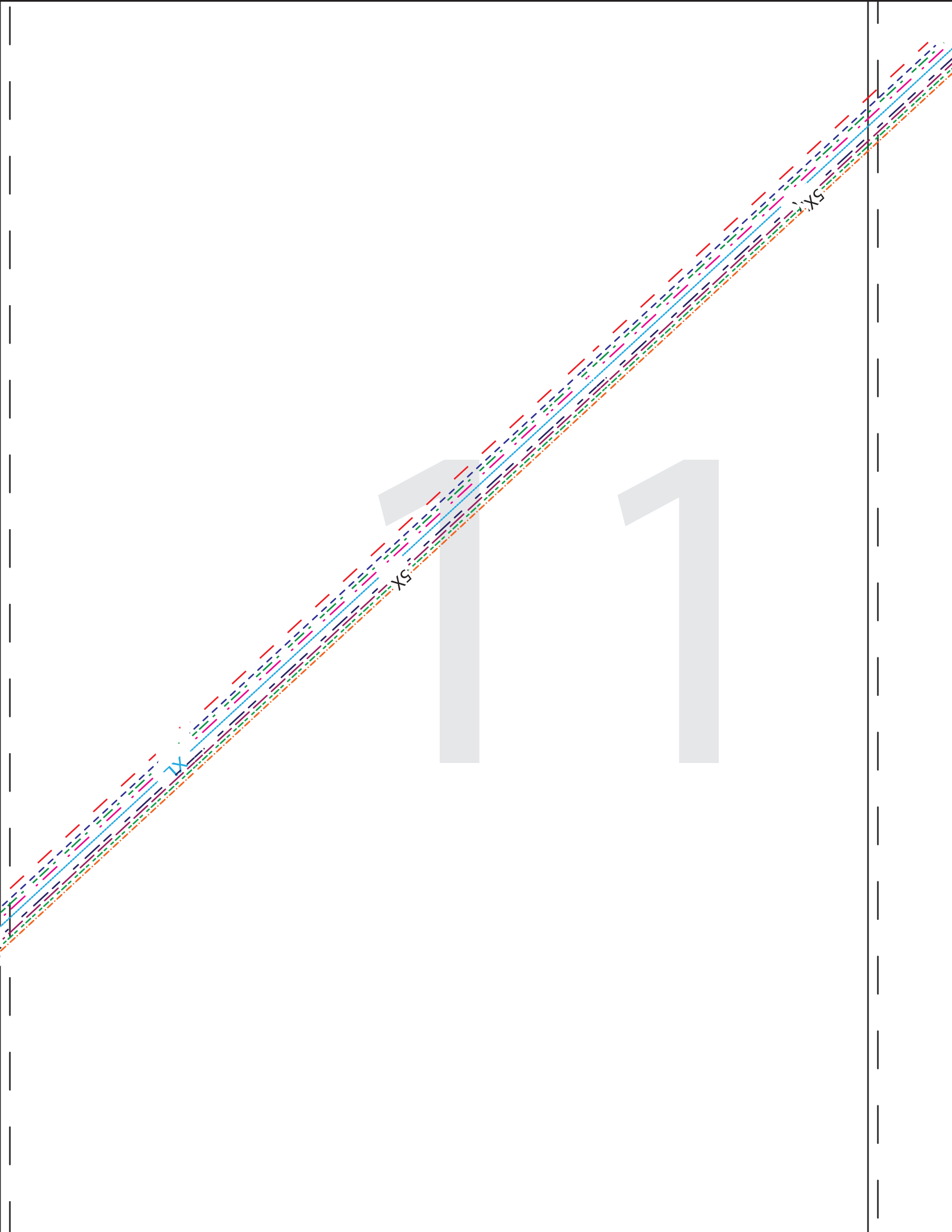
10

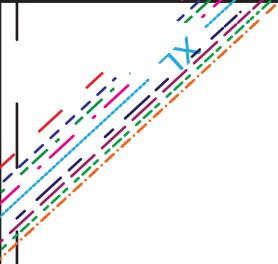


7x

5x

5x





12